

Edmond Women's Club NEWSLETTER

VOLUME 6, ISSUE 2
AUGUST 2015

A NOTE FROM OUR PRESIDENT



Sherry Jordan
sjordan@edmondchamber.com

Welcome!

This year marks our 33rd year of service to the community of Edmond. Our members have helped EWC give back over \$3 million during this time. Our Leadership Summit was held on July 27th and our 2015-16 Leadership Team is committed to making this the best year possible.

Our first event for the year was our *New Member Open House* held on July 30th with about 40 new and prospective members in attendance. Dr. Megan January graciously welcomed the prospective Provisionals at her beautiful home. Please make sure that these new members feel welcomed at all of our events!

Our next event for the year is our *Kick-Off Party on August 27th* from 6:30-8 pm at the Edmond Fine Arts Institute. This is a come-and-go event and all members of the club, including sustainers, are invited to attend and enjoy wine and art while connecting with old friends and making new ones. One of our EWC founders and former mayor of the City of Edmond, Sandra Naifeh, will be speaking at the event.

Committee Placement: Thank you to everyone who signed up for their committee placement. I have given the lists to your chairs and they should be getting in touch with you soon. Remember, you can sign up for more than one committee, so if you wish to serve on additional committees, let me know and I will add you to their list. The committee placements can be accessed in the members only section of our website.

I am honored to serve as your President this year, and I look forward to seeing everyone at our events!

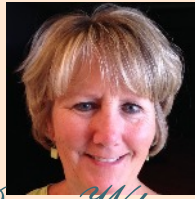
INSIDE THIS ISSUE:



- Money Matters
- Upcoming Events
- Personal Data
- Provisional News
- Merry Marketplace
- Community Projects
- Gala
- Wine+Restaurant Pull
- Website
- Highlights

To serve is beautiful, but only if it is done with joy and a whole heart!

MONEY MATTERS



Pam Whitt
Treasurer

Summer and the heat have finally arrived! I hope everyone is enjoying summer but thinking about and looking forward to EWC's 33rd year!

Dues for the 2015-2016 year were due on May 15, 2015. Emails were recently sent out with a reminder for members whose records don't reflect payments for the dues.

- Active dues are \$100
- Preferred Active and Sustainer dues are \$75.
- Provisional dues are \$100 plus a \$50 provisional course fee which are both due on September 1, 2015.

If you are unsure if your dues have been paid you can log on to ewc.org or send me an email at pmewhitt@att.net.

The \$100 community donation for Active and Provisional members is due November 1, 2015.

Payments for any of the above can be made on-line which I'd like to encourage everyone to do as it streamlines processing payments, or by mailing to a check to: EWC, PO Box 3046, Edmond, OK 73083

Meal prices for general membership will be \$20 if you register by Friday before the meeting, and \$25 after that time. The meal prices for last year were \$18 and \$23. The club pays Oak Tree \$25 for each attendee, so even with this increase the club will still be subsidizing the cost of the meals by \$5 (for early registrants) and breaking even for late registrants. I am confident each of you understand the reason for the increase, we want to use our funds to assist the community.

Bank Balances as of 07/21/2014

Checking	\$ 1,797
Money Market	\$16,034
Special Activity	\$ 3,642

All scholarships for both the 2014/2015 and 2015/2016 academic years have now been paid.

UPCOMING EVENTS:

To register for an event. click on its date.

FRI-SAT, AUG 14-15:
U R Special - Back to School

TUE, AUG 25:
Provisional Meeting

THU, AUG 27:
Fall Kick-Off Party

THU, SEP 17:
General Meeting

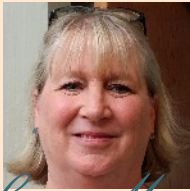
SAT, SEP 19:
Adopt-A-Street Trash Collection

TUE, SEP 22:
Provisional Meeting

“Thank you for your partnership with the University of Central Oklahoma. It is through your belief in the University that we are able to continue to strengthen the many transformative programs and services available to our students.

Please know your generous gift will make a difference to the students of the University of Central Oklahoma. In the current economic climate, your continued interest and support are especially meaningful. “

Tina Frazier
Manager of Advancement Services
UCO Foundation



Susie Murray
Records Chair

PERSONAL DATA

Hello Ladies!

Please take a moment to visit ewc.org to ensure all of your information is correct. Please check your address, phone and email address. We don't want to leave you out of all the fun and exciting news or activity announcements.

If you have any question or problems, contact me at susielm@sbcglobal.net.

PROVISIONAL NEWS



Next Provisional Meeting:

Tuesday, August 25, 2015

6:00 pm

Edmond Chamber of Commerce

825 E 2nd Street, Edmond

[CLICK HERE](#) to register



Cassie Wells

Provisional Co-Chair



Debbie Wells

Provisional Co-Chair

We don't know how many of you watched the Tour de France – it was amazing! Something fascinating about bike racing is the strategy of the peloton.

If you're not familiar, the peloton is a large group of riders from all different teams that ride together for the bulk of each stage of the race – often seconds or minutes behind a small number of lead riders. This group of riders takes turns leading the peloton, allowing the riders behind to draft off the front riders. By riding together in this way, they conserve great amounts of energy and are often able to catch up to the lead riders, having exerted less effort to cover the same ground.

In EWC, as we work together, we function as a peloton. The more members we have working together, the more we can accomplish with less hard work from individual members. We have some SUPER women in our provisional class and we know that you will love meeting them soon! But we could benefit from a larger group. The membership deadline is August 31st.

If you have a friend or associate that would be great in EWC, let us know. Please email us with their name and contact information. You can invite them to the first provisional meeting, to be held on Tuesday, August 25th at 6 pm at the Edmond Chamber of Commerce (825 E 2nd St., Edmond, 73034). They can also go to ewc.org to find out more about EWC and apply for membership.

MERRY MARKETPLACE UPDATE !!

Merry Marketplace Chair

Keri.mckiddie@dvn.com

405.824.1827



Keri McKiddie

We have struck a deal with Gaillardia to move the Market to their clubhouse this coming Fall! This means more vendor space at a beautiful location! We still plan to partner this year with **Uptown Grocery!** Uptown will bring in multiple tasting stations. These will vary from their bakery/deli to their gourmet cheese and a special Chef's demonstration. Uptown's involvement will cut our food costs as well as bring an element of entertainment to this year's market. Make sure to sample all that Uptown has to offer. Last year, the food was amazing! Don't miss your complimentary glass of champagne while you're shopping. The champagne is donated by Glazer's of Oklahoma.

We are looking for new and exciting vendors so if you know of any or happen to be out and about at another market, pick up a card and get the info over to me! Keri.mckiddie@dvn.com 405.824.1827.

Don't forget to get your calendar out and save the date Friday, November 20th 11am-7pm. Ticket prices are \$20 in advance and \$25 at the door. Please go online now and purchase your tickets at www.ewc.org or **CLICK HERE.**

This Merry Marketplace will be one to remember!



“ Camp Fire is sincerely grateful for your donation to support the safety, health and wellness of our summer campers. We're extremely honored that you continue to support our efforts of youth development. We invite you to come and visit us during the year's summer camp. You can then witness how your support is being utilized.

Our goal is to remain at the forefront of youth development by continuing to improve our programs, reach out to more youth, and remain relevant to the changing needs of youth today. We know there is a growing need for our services and programs, and with friends like you, we will be able to meet and fulfill that need. ”

Herb Gilkey, CEO
Camp Fire Heart of Oklahoma

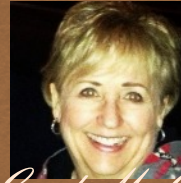
(Back to Front Page)

COMMUNITY PROJECTS

VP Community
CGoddard@inventivhealth.com



Charlotte Goddard



Community Project Chair
Gailmccann@gmail.com
405.650.0140

Gail McCann

Summer is almost over and we are making preparations for an exciting and fulfilling year for you to volunteer for the many community projects that EWC offers. Welcome to our new members and Ambassador Group. There is something for everyone!

Our first event of the 2015-16 year will be the initial U R Special Clothing Distribution to get our Edmond kids in brand new clothing for the first day of school. Volunteers are needed to work two-hour distribution shifts on Friday, August 15th between 9:30 a.m. and 7:30 p.m. and on Saturday, August 16th from 9:30 a.m. – 1:30 p.m. U R Special is one of the most fun and fulfilling projects to be involved with and is a great way to take part in clothing hundreds of Edmond children who qualify for the program. Shifts are available so sign up on our EWC website. To find out more information about U R Special you can go to <http://urspecialedmond.org/index.php>.

[Click HERE to sign up for U R Special](#)



The Fall will provide many opportunities to earn credits and we will have dates for the following activities soon:

- Adopt –A-Street
- Free to Live – Animal shelter
- Miracle League Fall Games
- U R Special Winter Clothing Distribution

Continuing Projects are listed on the EWC website and offer numerous opportunities to help organizations like The Hope Center, Meals on Wheels, Wings, and Breakfast on Broadway.

We're working on other activities for the year so continue to look for updates and sign up information in the EWC newsletters, email blasts, on line, and at our monthly meetings. With your kindred spirit and the outstanding volunteer contributions you all make, we expect to have an exceptional year for our community and those who benefit.

MARDI GRAS GALA

MARDI GRAS GALA

Saturday, February 27th

Oak Tree Country Club

We are very excited to announce 2016 Edmond Women's Club Mardi Gras Gala. It will take place on February 27th at Oak Tree Golf and Country Club. We will have live entertainment, an outdoor men's cigar lounge and lots of great auction items. Save the date now, you will not want to miss this amazing event!



Crystal Barte
Gala Co-Chair



Natalie Francis
Gala Co-Chair



Megan January

VP Membership

drmeganjanuary@yahoo.com

254.855.1800

MEMBERSHIP

We are SUPER excited about this upcoming year and all of the new Provisionals. Please let all of the amazing women you know that we are taking applications for next year! Here are the EWC membership requirements:

Financial - \$100 dues, due by the May general meeting

- \$100 community donation due by November 1st of the same calendar year

- \$50 provisional course fee

Placement - Serve as a member on at least one committee and fulfill committee requirements

General Meetings - Attend at least 50% (4) of the general meetings

Provisional Meetings - Attend at least 4 of the provisional meetings

EWC Fundraiser - Serve at least 2 shifts (2 hours each) at an EWC fundraiser

EWC Community Projects - Serve at least 2 shifts (2 hours each) at an EWC community project

Remember to spread the word about our Ambassador Program. We are accepting applications from Juniors and Seniors that live in Edmond. They can go to EWC.org and get all of the information and application.

If anyone has any questions or concerns about membership or the Ambassador Program please do not hesitate to call me.



2016

EdwC
EDMOND WOMEN'S CLUB
presents
**Mardi Gras
Gala**

Saturday, February 27th

6:30 pm

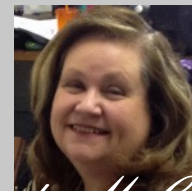
Oak Tree Country Club

***Dinner • Dancing
Silent Auction • Live Auction***



Sisca Wolff
siscawolff@gmail.com

WINE+RESTAURANT *Pull*



Marchi McCartney
jlmacney@msn.com

After serving on the Grants Committee for two years, we decided we needed to raise more money at the Gala in order to fulfill more of the grant requests. The Grants Committee has the difficult task of eliminating some portions of the grant requests. We believe that we can raise more dollars through the Wine+Restaurant Pull as part of the gala fundraising effort. We have set goals of raising \$2,000 from the Wine Pull and \$2,500 from the Restaurant Pull. In order to reach these goals, we need help from every one of you.

A Restaurant Pull will be a new addition to the gala. Here's how it works. Patrons pay \$50 for an envelope which has at least \$50 of restaurant gift card(s) in it. No fast food restaurant. Some envelopes may have more than \$50 of gift cards. In order to meet our goal of \$2,500, we need 50 envelopes with at least \$50 in each envelope. Restaurant gift cards can be solicited from restaurants that you patronize or you can purchase the cards. We will take restaurant gift cards in any amount, since sometimes restaurants will give less than \$50 gift cards. Gift cards will still total \$50 or more per envelope. Check your credit card points to see if they can be used to purchase restaurant gift cards.

The Wine Pull is not a new addition to the gala; however, it will be changed somewhat. First, white and red wines will be designated differently, since some patrons only like red or white wine. Second, In addition to a \$20 pull, we may have additional price pull depending on the value of the wine that we collect. We will use different colored ribbons to tie the tops of silver mylar bags to designate the differences. Wine can be solicited from vendors or donated by EWC members. If you know the value of the wine you are donating, please let us know so that the wines can be designated properly. You can submit a copy of the receipt. Otherwise we have to determine the value of the wine. We are accepting wine bottles at \$ 15 and above.

We need volunteers to serve on this committee and to solicit liquor vendors. We will provide you with necessary documentation. If you are interested, contact either Marchi at 405.921.8129 or jlmacney@msn.com or Susca at 785.5501576 or siscawolff@gmail.com.

Remember, between now and the holidays, if you get a restaurant gift card or a bottle of wine that you will not be using or drinking, please donate them to the Wine+Restaurant Pull, or if purchasing restaurant gift cards or bottles of wine just add an extra one to your basket. Donations can be brought to any EWC function or for pickup contact Marchi or Susca. We are ready to accept any card and wine donation at the Kick-Off meeting on Thursday, August 27th.



Emily Taylor
Webmaster

As you may have noticed, the website has been updated, but there is still much needed work to be done. I am currently still working on the mobile site and finalizing the design of our new logo. If you have any suggestions to the site, please email me at teamtaylor10@gmail.com.

Edmond Women's Club HIGHLIGHTS

The New Member Open House.



President Sherry Jordan addressing the prospective members.



Current EWC members mingling with prospective member.



Provisional Co-chairs Debbie Wells and Cassie Wells answering questions from prospective members.

Edmond Women's Club HIGHLIGHTS



Sherry Jordan, Lisa Owen, and Pam Whitt spent time cleaning the EWC office. They found different kinds of plates, napkins, stationary, envelopes, empty notebooks, some office supplies. If you need any of those items for your committee, please check with us and use what we already have first.

“ Thank you for your generous grant to the Oklahoma Arts Institute which will be used to provide scholarships for 2 Edmond students.

The excitement leading up to the 2015 Oklahoma Summer Arts Institute has begun! Auditions have concluded, and nearly 1,000 of Oklahoma's most talented high school students from around the state have auditioned in acting, creative writing, ballet, modern dance, orchestra, chorus, drawing & painting, photography, and film& video. The top 270 students selected will receive full scholarships to attend the Institute at Quartz Mountain, June 13-28. “

Julie Cohen
President & CEO
Oklahoma Arts Institute

SNAP SOME PICTURES

Take pictures of EWC events and share them on the newsletter and the website. Send the pictures with captions of what's going on and names of the EWC members in the pictures to:
Sisca Wolff, Newsletter chair at siscawolff@gmail.com
and
Emily Taylor, Webmaster at teamtaylor10@gmail.com